

Built: 1981 at Orenstein & Koppel AG Lübeck, Germany
GL Register No. 016549 GL Class *100 A5 E2 *MC E2 AUT IMO No.7928677

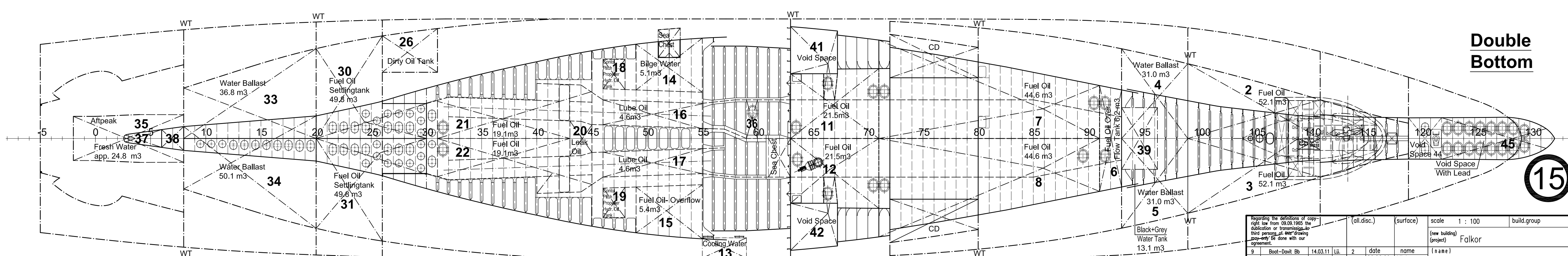
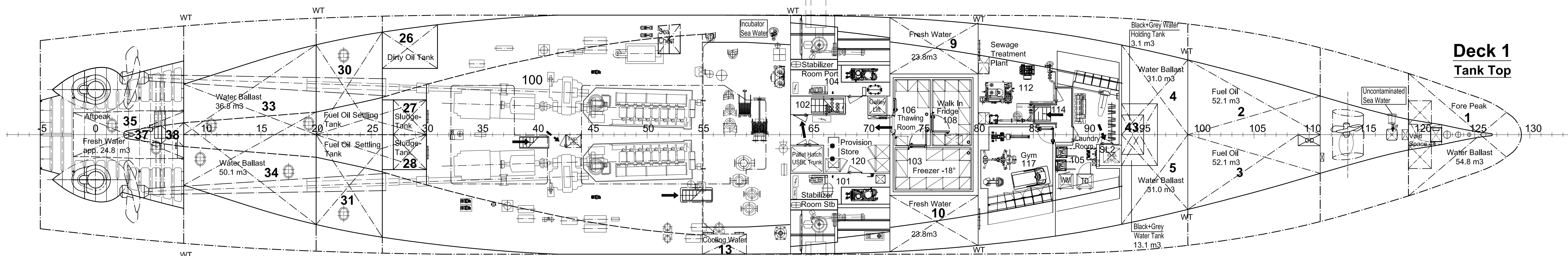
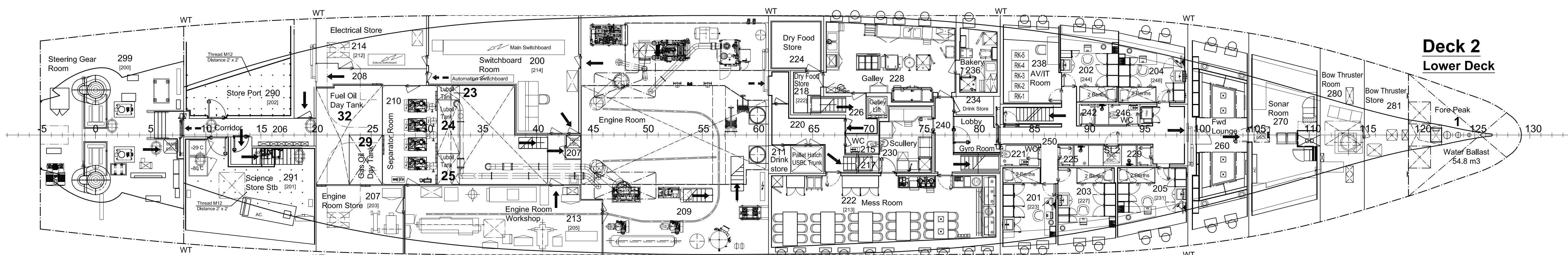
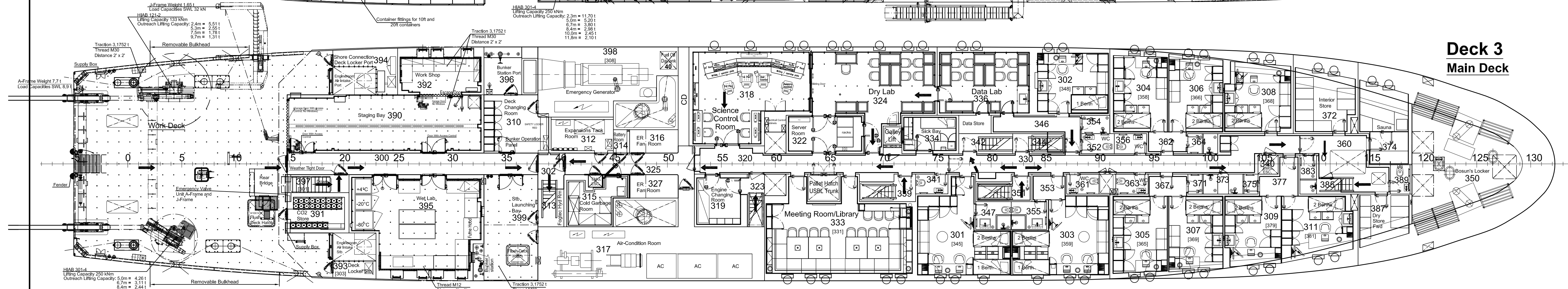
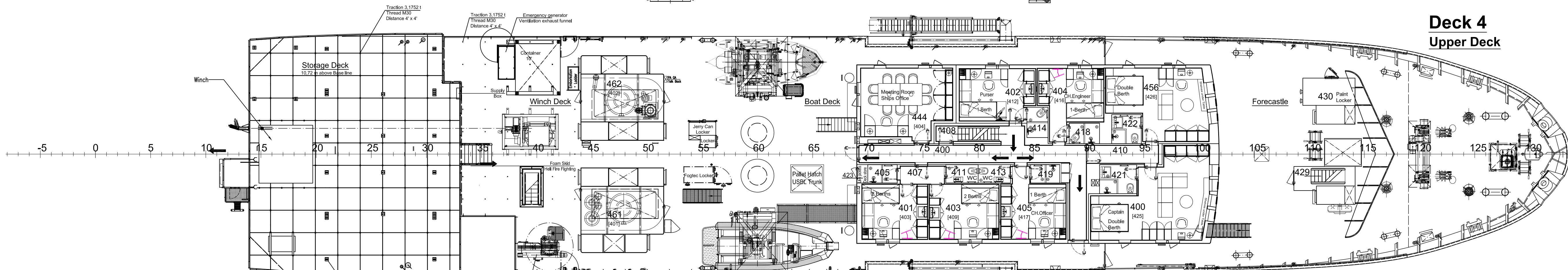
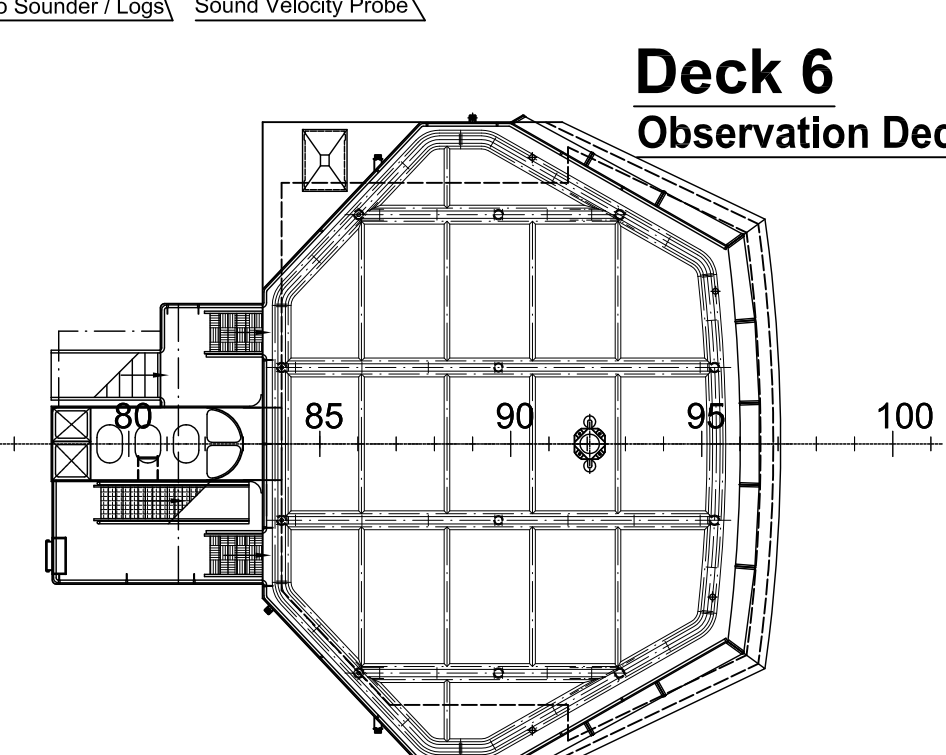
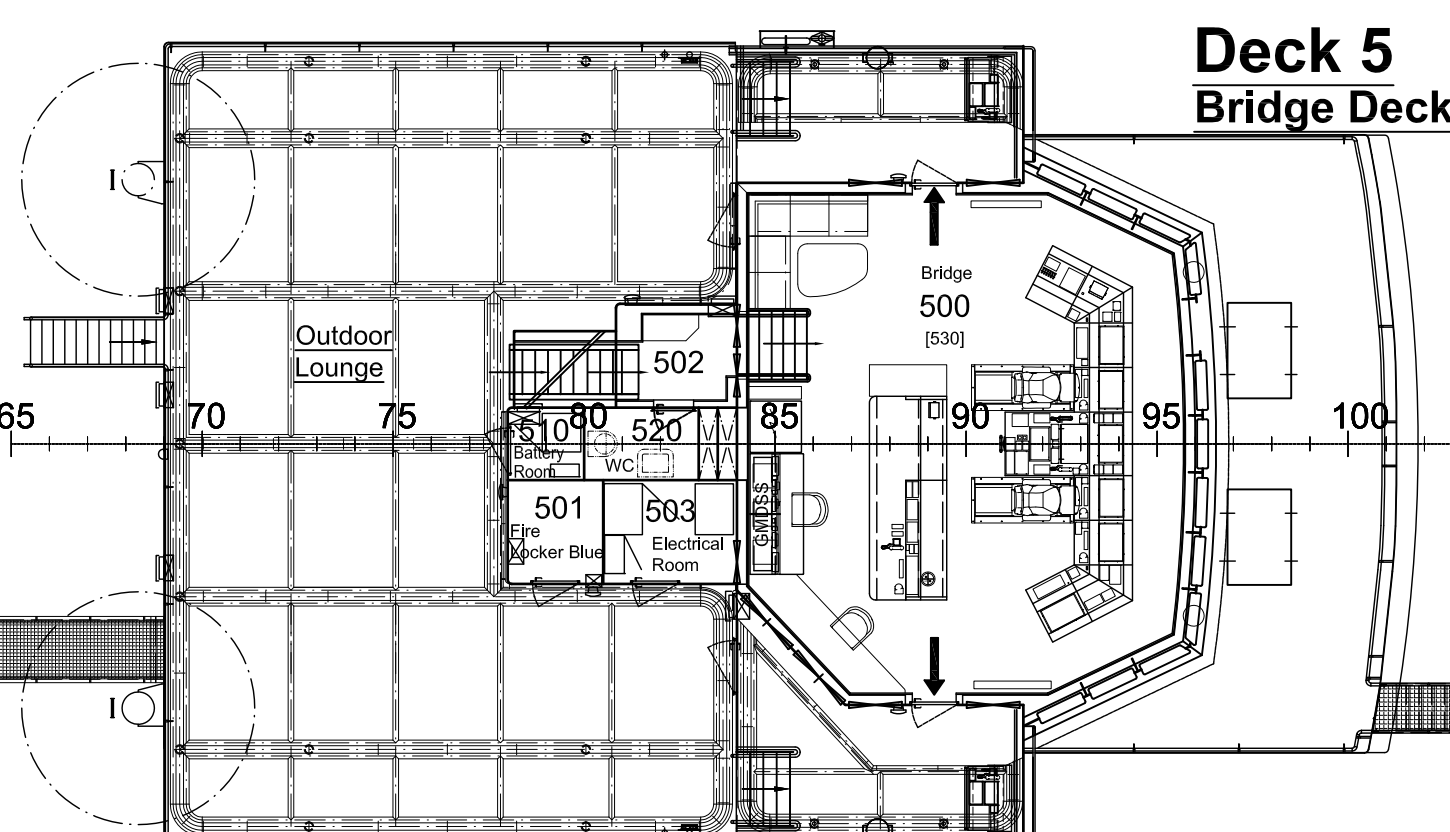
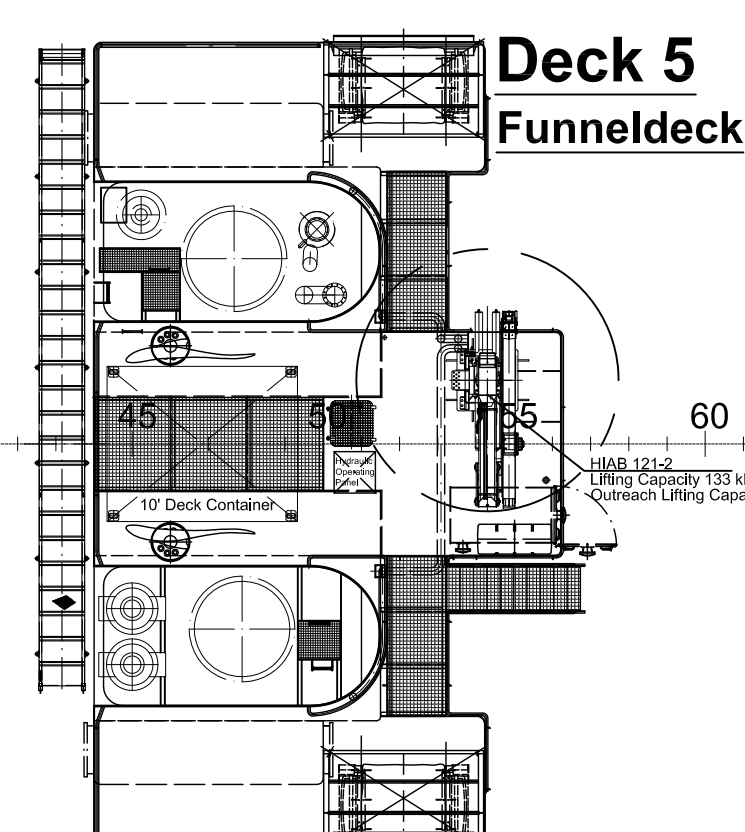
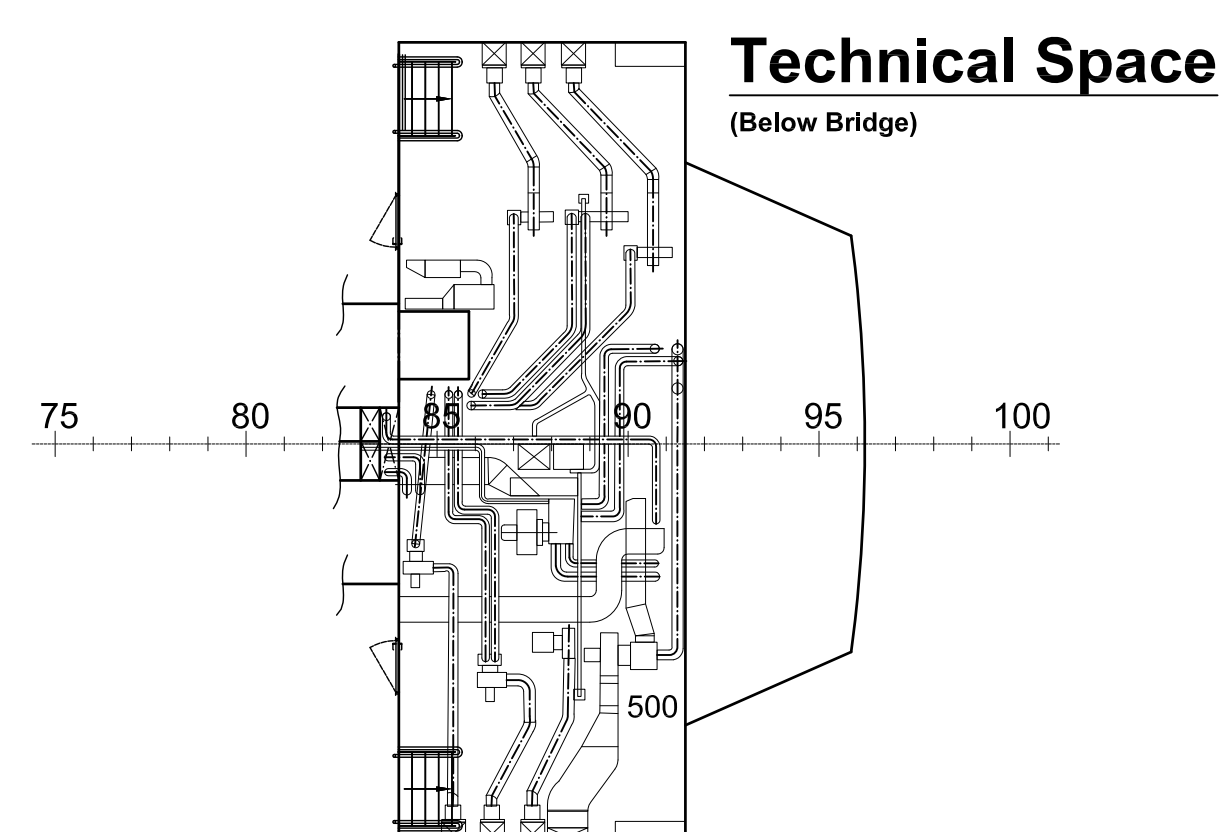
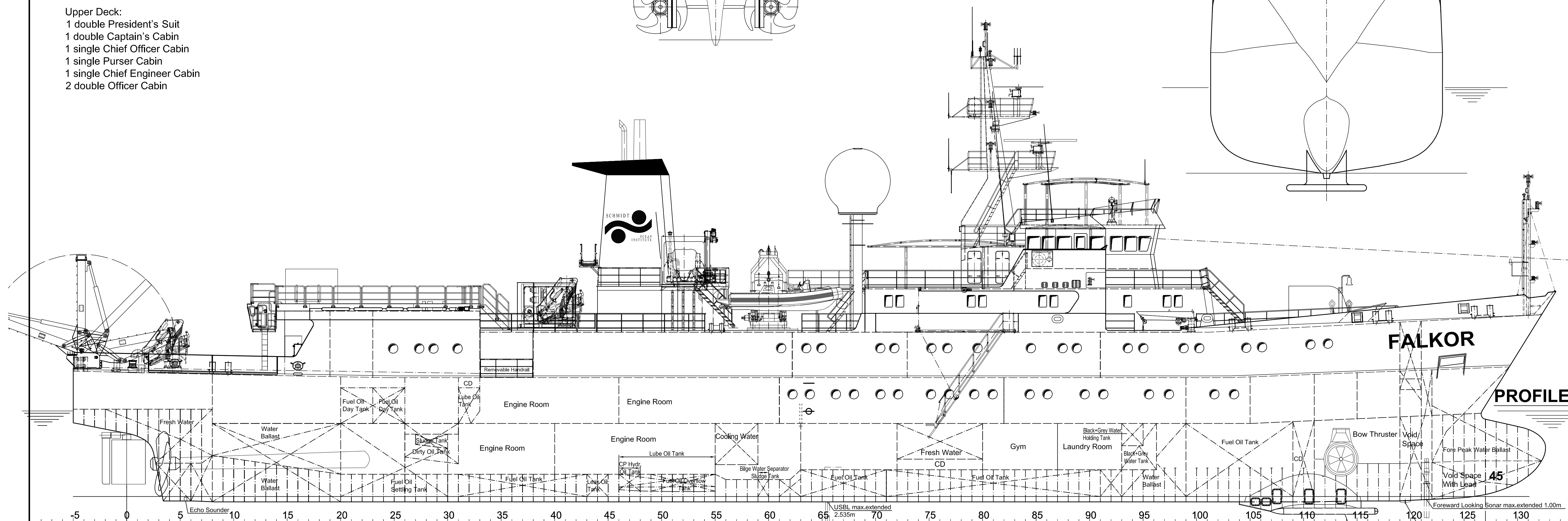
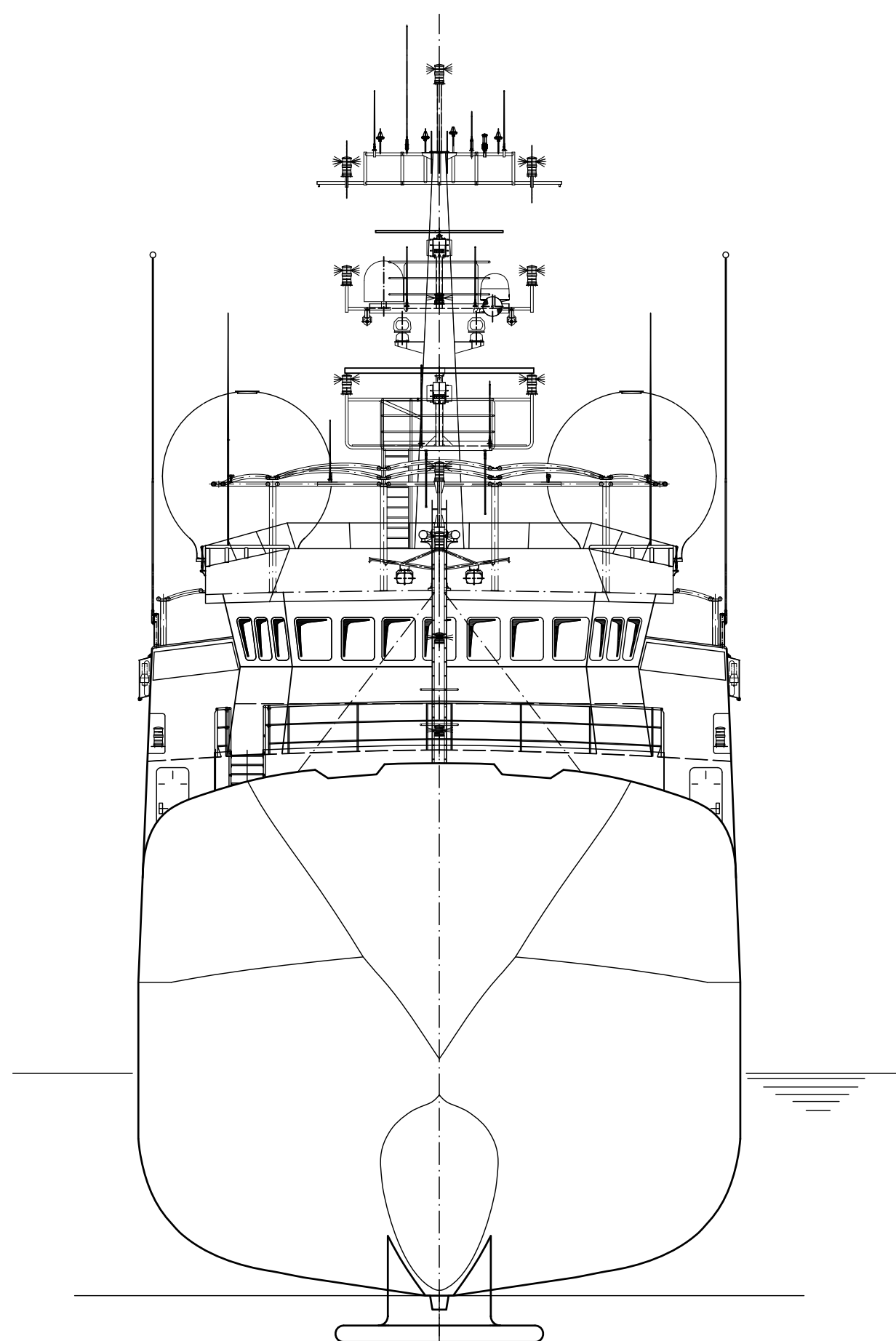
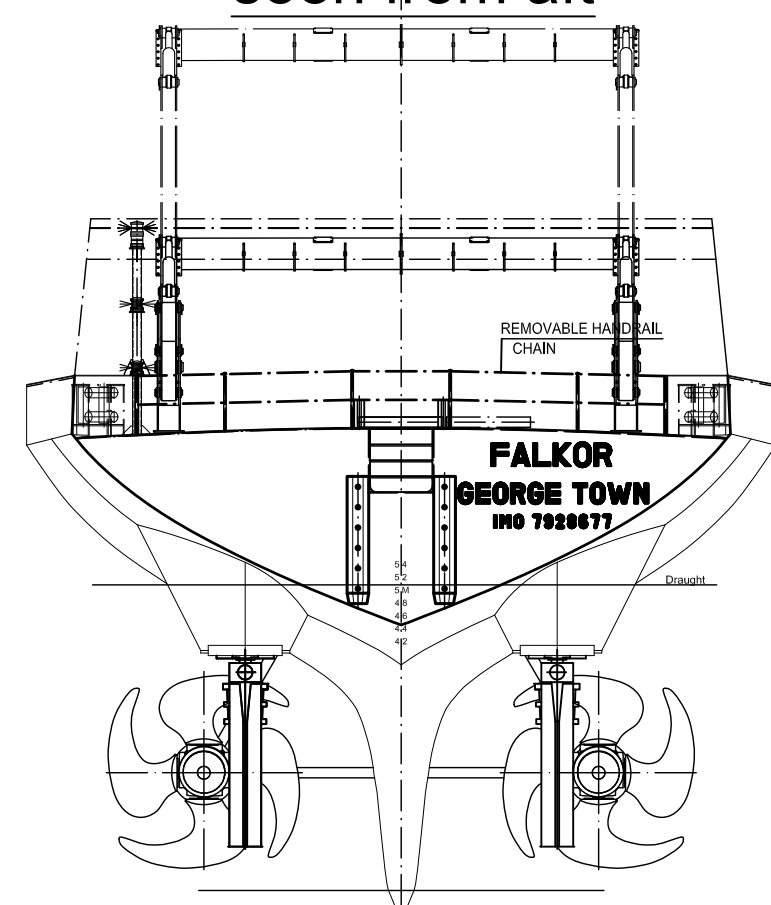
Air Draft : 23.52 m

Lower Deck:
5 double Crew Cabins

Main Deck:
7 double Scientist Cabins
1 double Marine Techs Cabin
2 triple Scientist Cabins
1 single Scientist Cabin

Upper Deck:
1 double President's Suit
1 double Captain's Cabin
1 single Chief Officer Cabin
1 single Purser Cabin
1 single Chief Engineer Cabin
2 double Officer Cabin

TRANSOM STERN
seen from aft



Double Bottom

15

Regarding the definition of copyright law from 20/08/1981 (copyright or trademark) third parties, the author/publisher is not liable for the content of the work.		(disc.)	(surface)	scale 1 : 100	build group		
				(see building project)	Falkor		
				1:scale			
				General Arrangement Plan			
4	Back-Shell tie	14.03.11	UL	1	scale	name	
5	A-Tree	04.06.11	UL	work	26.06.09	Lichow	
6	Jolly Deck	07.01.11	UL	exp.			
6	Veranda C	03.01.11	UL	rule			
8	Veranda	06.02.10	UL				
9	Veranda	27.01.10	UL				
5	Veranda	21.10.09	UL				
5	Veranda	06.06.09	UL				
		Peters		(drawing no.)			sheet
		Peters		09 / 124			1
one copy	one copy	one copy	one copy	one copy	one copy	one copy	one copy