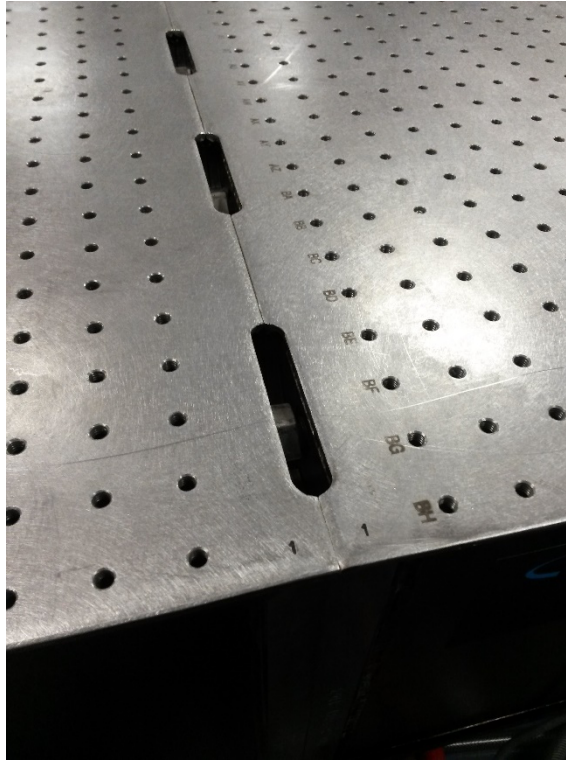


OPTICAL TABLES REQUIREMENTS

Optical Tables shall be provided according to the following requirements. Tables should be coupled together with hidden joints, see picture below as an example.



(example)

Other requirements for the tables are the following:

- Working surface: ferromagnetic stainless steel 4.8 mm thick or similar
- Surface flatness: $\pm 0.1\text{mm}$, over 600 mm square or similar
- Mounting holes: M6-1.0 holes on 25 mm grid, 12.5 mm borders
- Integrated Broadband Damping

OPTICAL TABLES DIMENSIONS

The required dimensions are given on the drawing below

